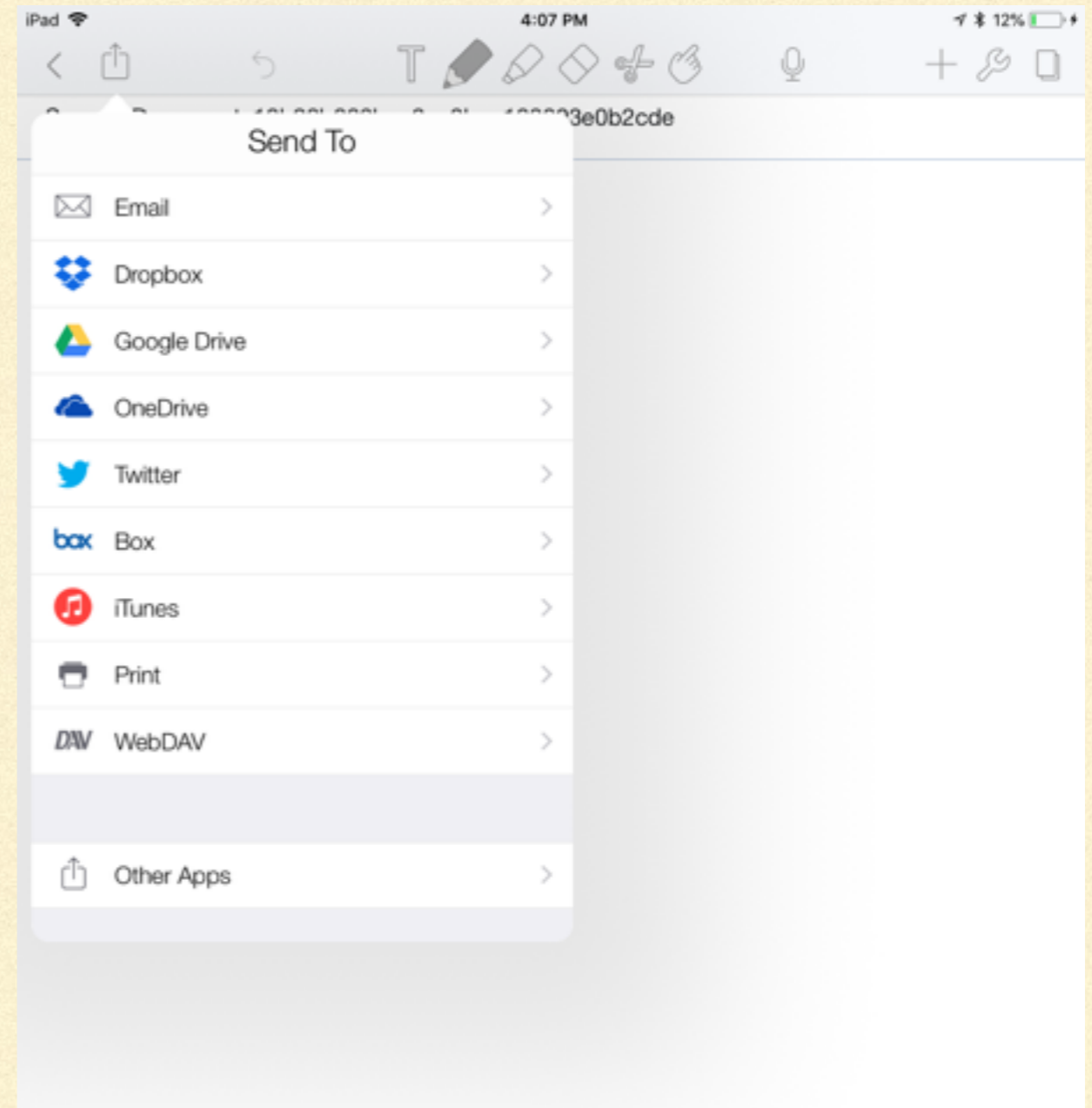

NOTABILITY TO GOOGLE DRIVE

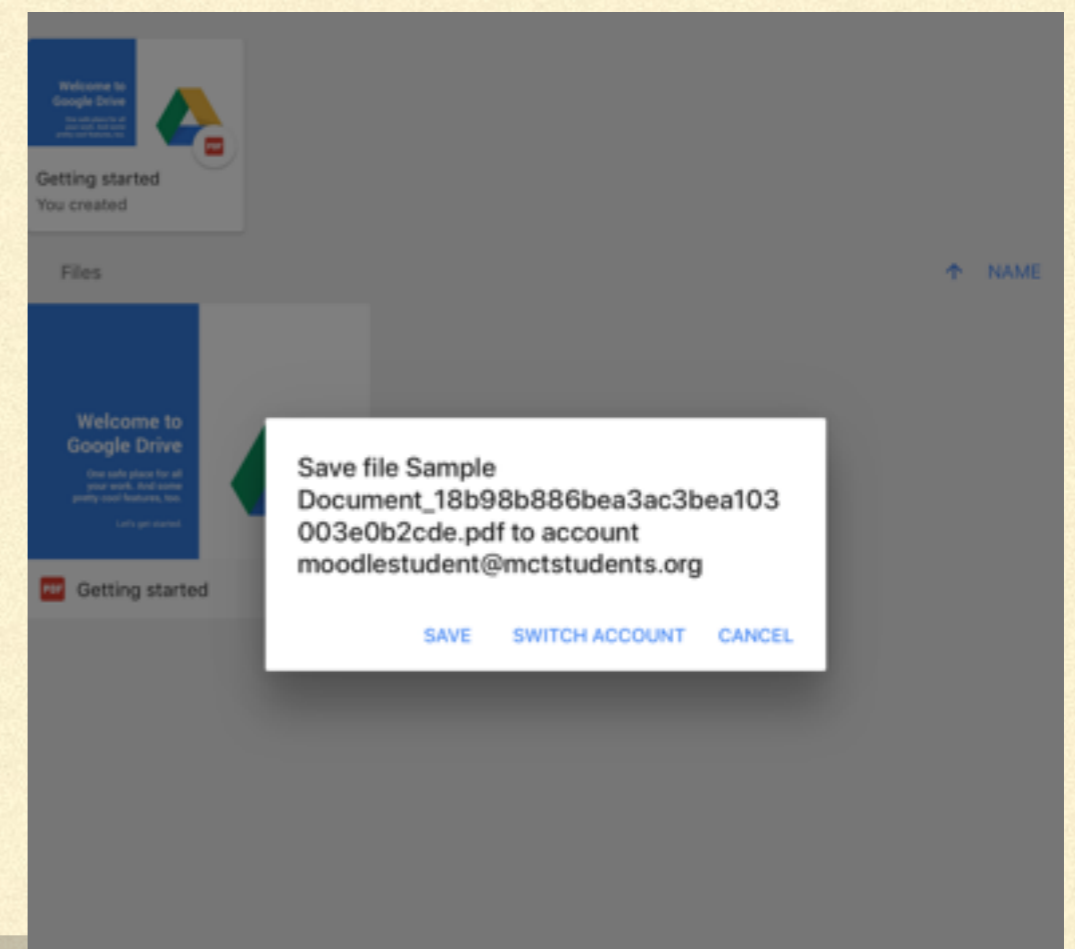
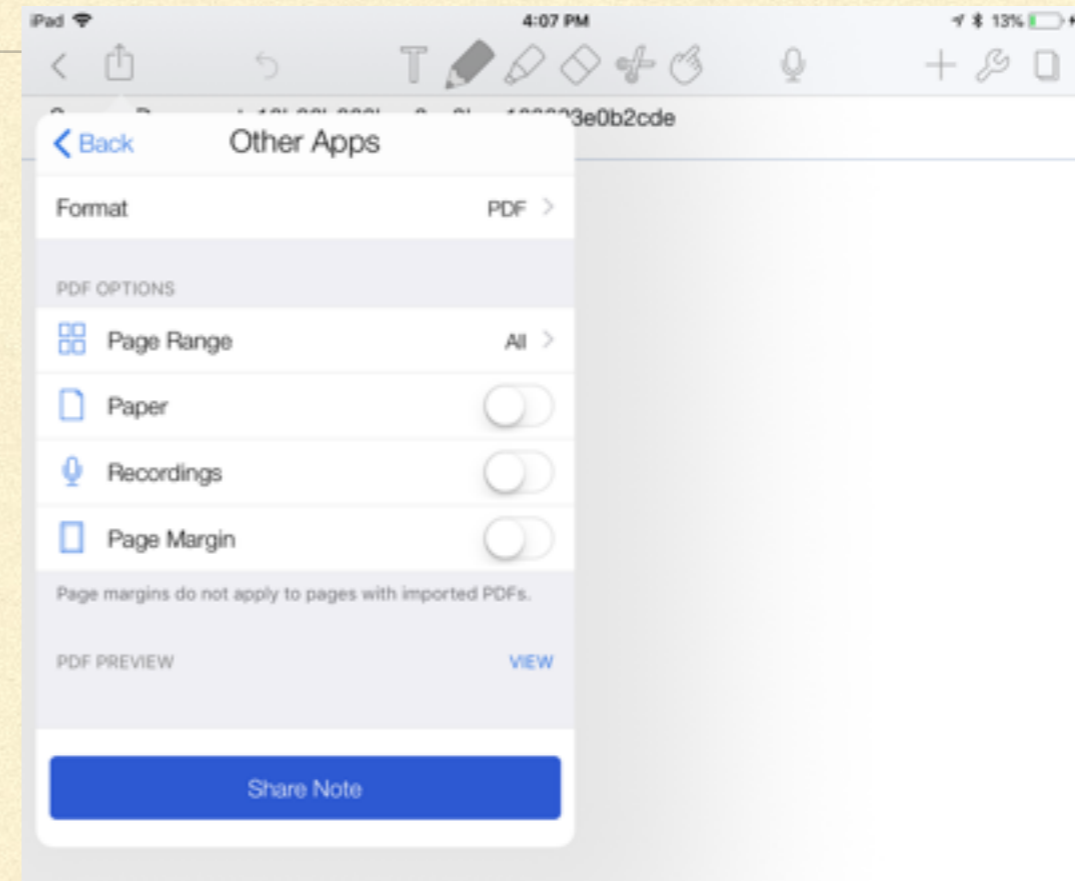
OPEN THE
DOCUMENT TO
SEND TO
MOODLE



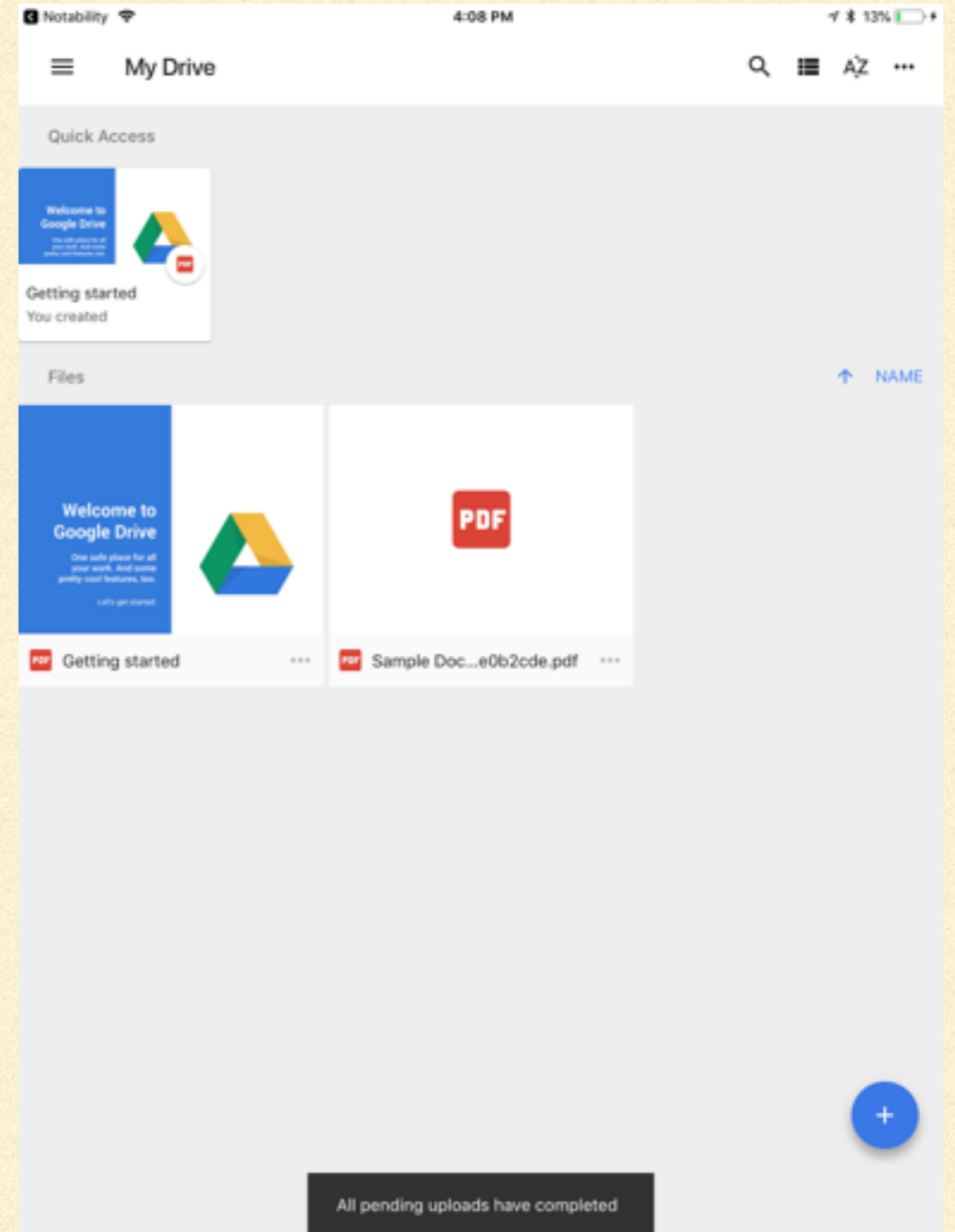
SELECT THE
SHARE BUTTON
(THE BOX WITH
AN UP ENTER)



- YOU CAN SEND STRAIGHT TO GOOGLE DRIVE OR CHOOSE OTHER APPS AND SEND TO GOOGLE DRIVE THAT WAY
- IF YOU CHOOSE TO SEND IT STRAIGHT TO GOOGLE DRIVE, YOU DON'T HAVE THE OPTION OF CHANGING ACCOUNTS, IF YOU CHOOSE TO SEND IT THROUGH OTHER APPS THEN GOOGLE DRIVE, YOU CAN CHANGE ACCOUNTS.
- THIS EXAMPLE SHOWS SENDING IT TO OTHER APPS IN ORDER TO SELECT THE ACCOUNT IT UPLOADS TO.

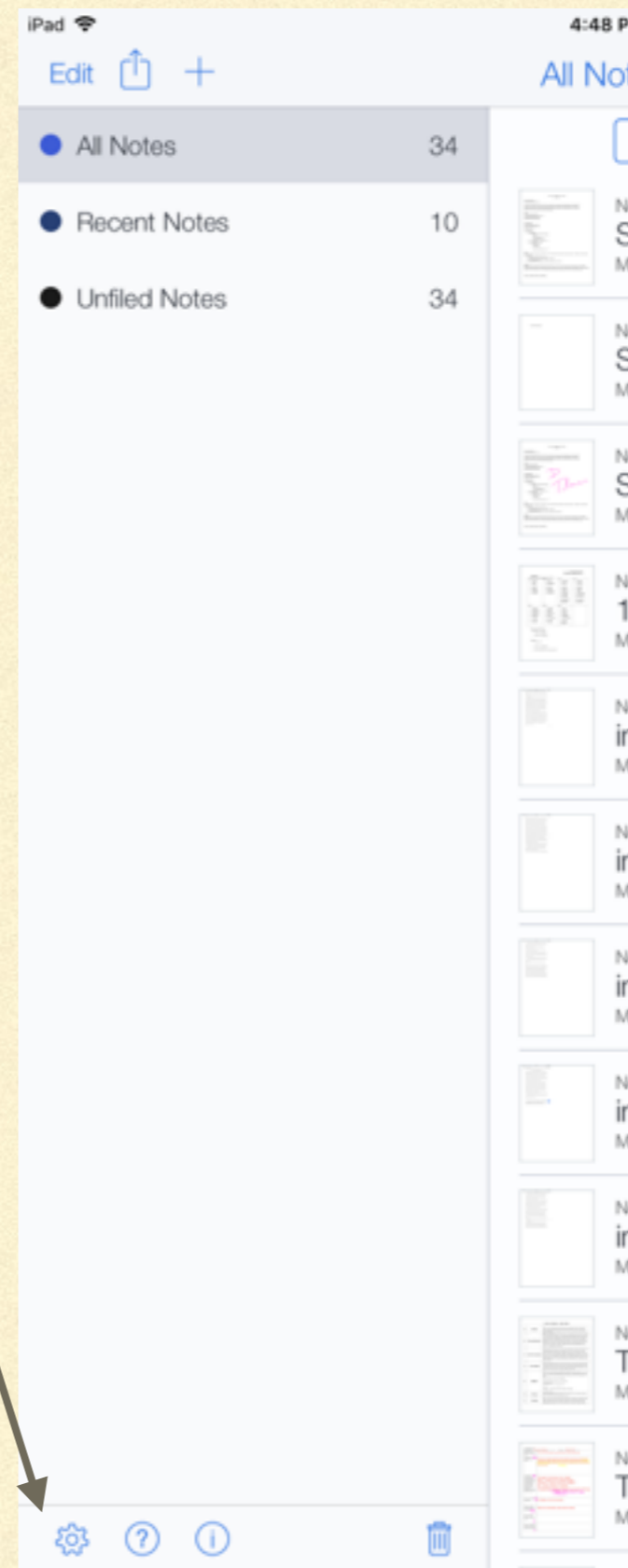


FILE UPLOADED TO GOOGLE DRIVE

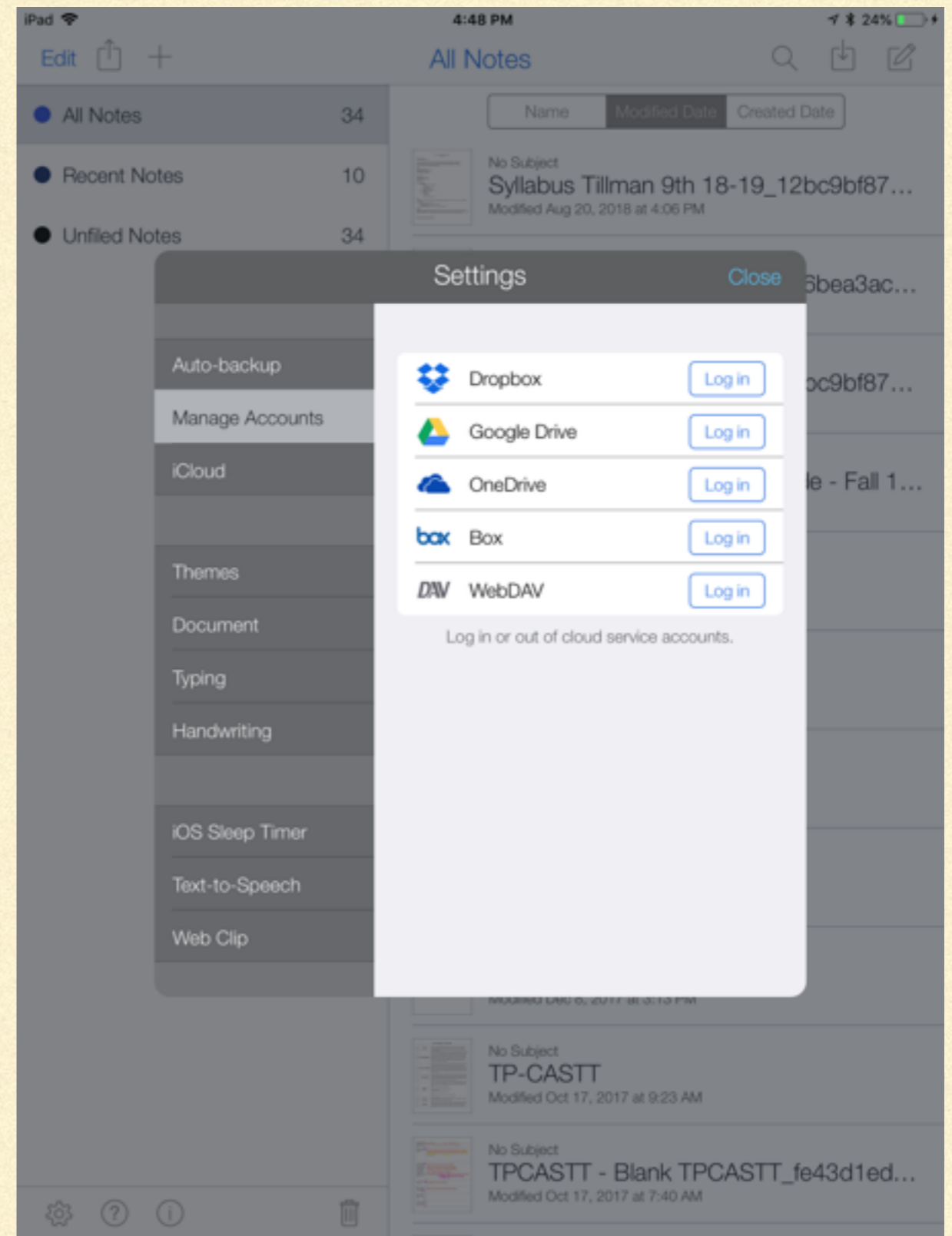


SETTING UP
NOTABILITY TO
USE YOUR
SCHOOL EMAIL
ACCOUNT

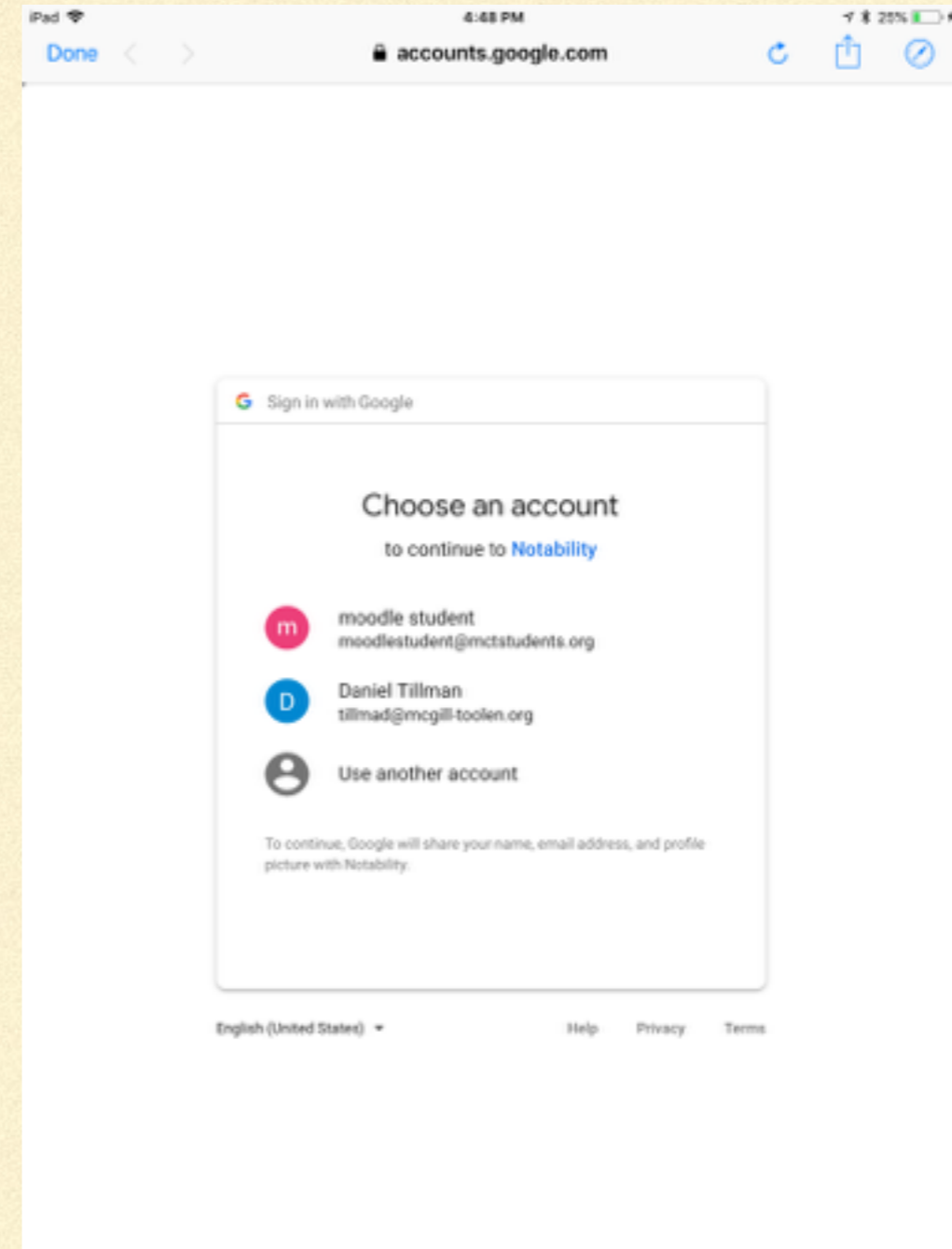
ON THE PAGE
WHERE YOU
SELECT THE FILE
TO OPEN, CLICK
THE COGWHEEL
IN THE BOTTOM
LEFT



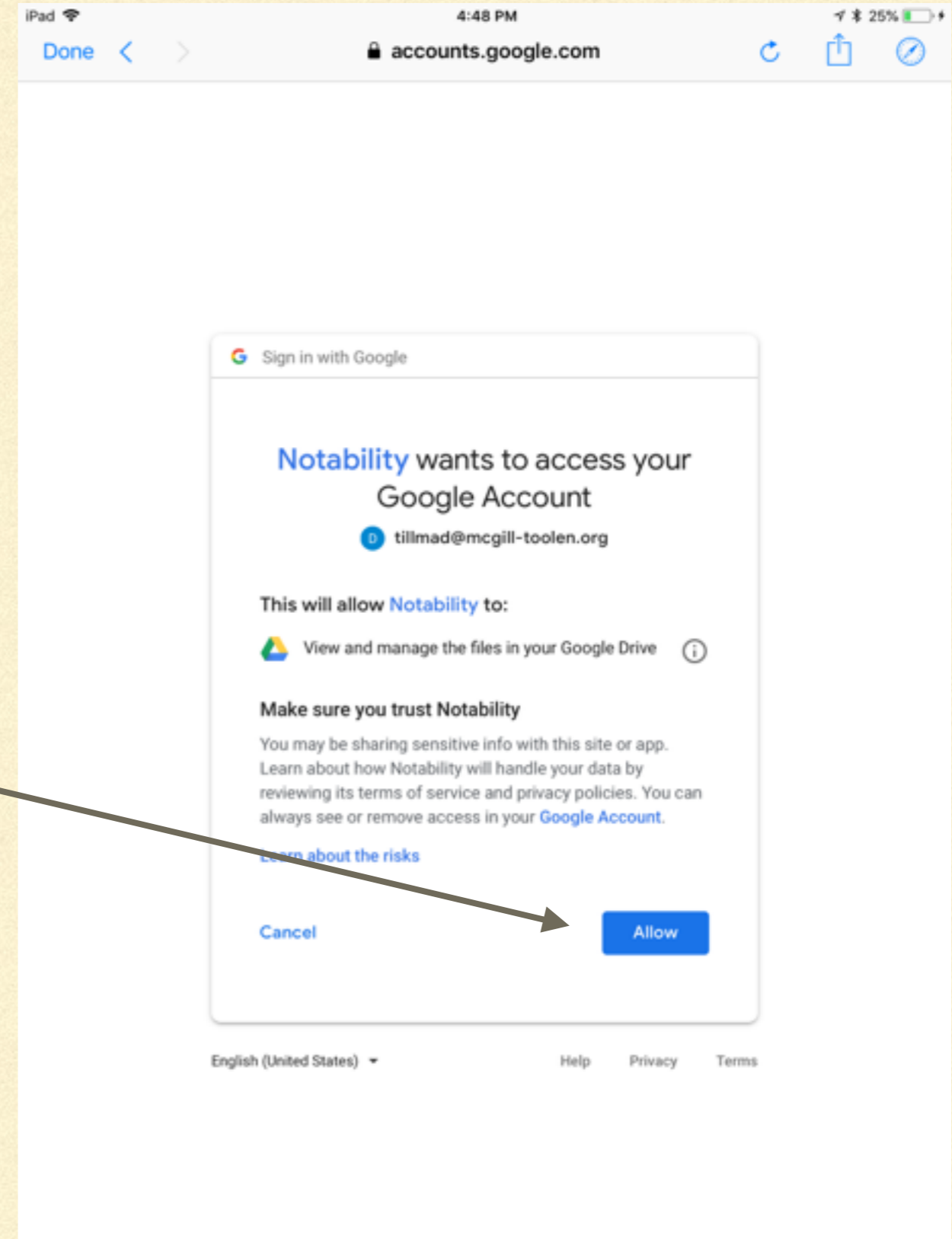
CLICK LOG IN
NEXT TO
GOOGLE DRIVE



SELECT YOUR SCHOOL EMAIL ACCOUNT



AGREE TO LET
NOTABILITY
ACCESS YOUR
ACCOUNT.



YOU ARE NOW
LOGGED IN AND
CAN SEND FILES
STRAIGHT TO
GOOGLE DRIVE
FROM
NOTABILITY IN
THE SHARE MENU

